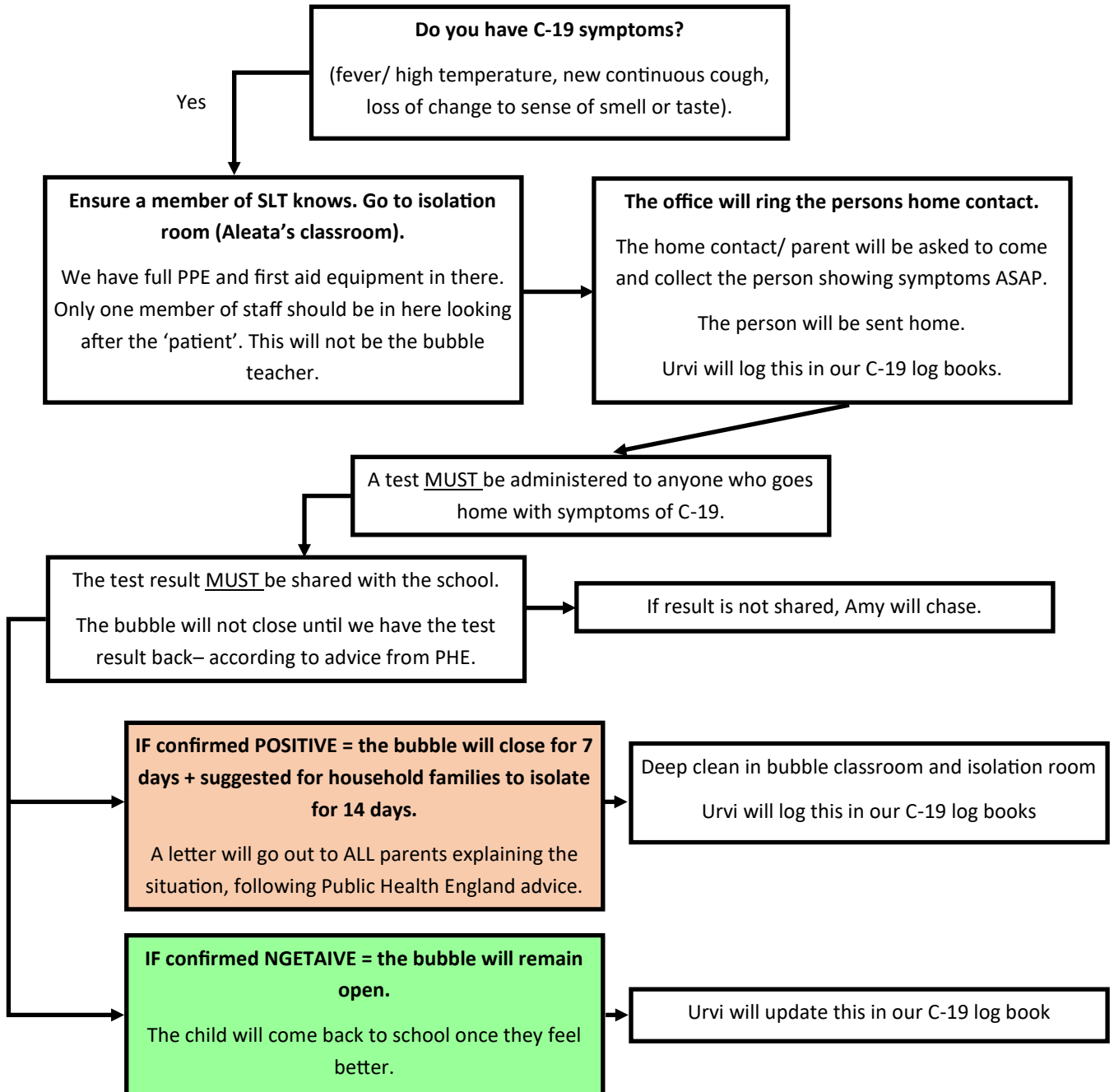


COVID-19 symptoms and illness flow chart

Parents will be asked to give 2 up to date contacts for their child as they drop them off at school on their first day. Amy will collect these on arrival.

Urvi will be collecting two contacts for all adults in school in case we need to contact anyone to collect you. These will be stored in our C-19 log book.



PPE onsite:

Face visors; masks; gloves; fluid resistant aprons; antibacterial wipes, spray, mist; hand sanitiser.

First aid onsite:

Thermometer (ear and forehead scanner), grab bags fully equipped.